

What are we telling you about?

Our work to grass cut from the Alde-Ore and Butley estuaries flood defences. This work will be to maintain the effectiveness of the defences.

Where is this work happening?

Over the course of the grass cutting works, we will be working on defences throughout the Alde-Ore and Butley estuaries (indicated on the maps overleaf) – a total approximate length of 50km.

When is this work happening?

The work will take place in September and October 2015. The timing of work on each section of the sea wall is dependent on ecological features including the impact to breeding and wintering birds, invertebrates and reptiles, as well as the ground conditions.

What will we be doing?

We will carry out general grass cutting works on the raised tidal flood embankments. Grass will be cut to a minimum height of 150mm.

Works will be carried out using small plant and motorised hand tools. The choice of plant will depend on the work required, access available at the site and ground conditions. Cut materials will be left on site to naturally decompose as habitat for lizards and other species.

To ensure the safety of footpath users, we will temporarily stop work if anyone approaches the area we are working on so that they can pass by.

Why are we doing this work?

Grass cutting on flood banks is essential to ensure they operate to a high standard during floods. Clearing the grass also allows us to inspect the defences for any defects. We cut the grass on the banks at regular intervals through the year to keep grass/vegetation at a manageable level.

How will this work benefit you?

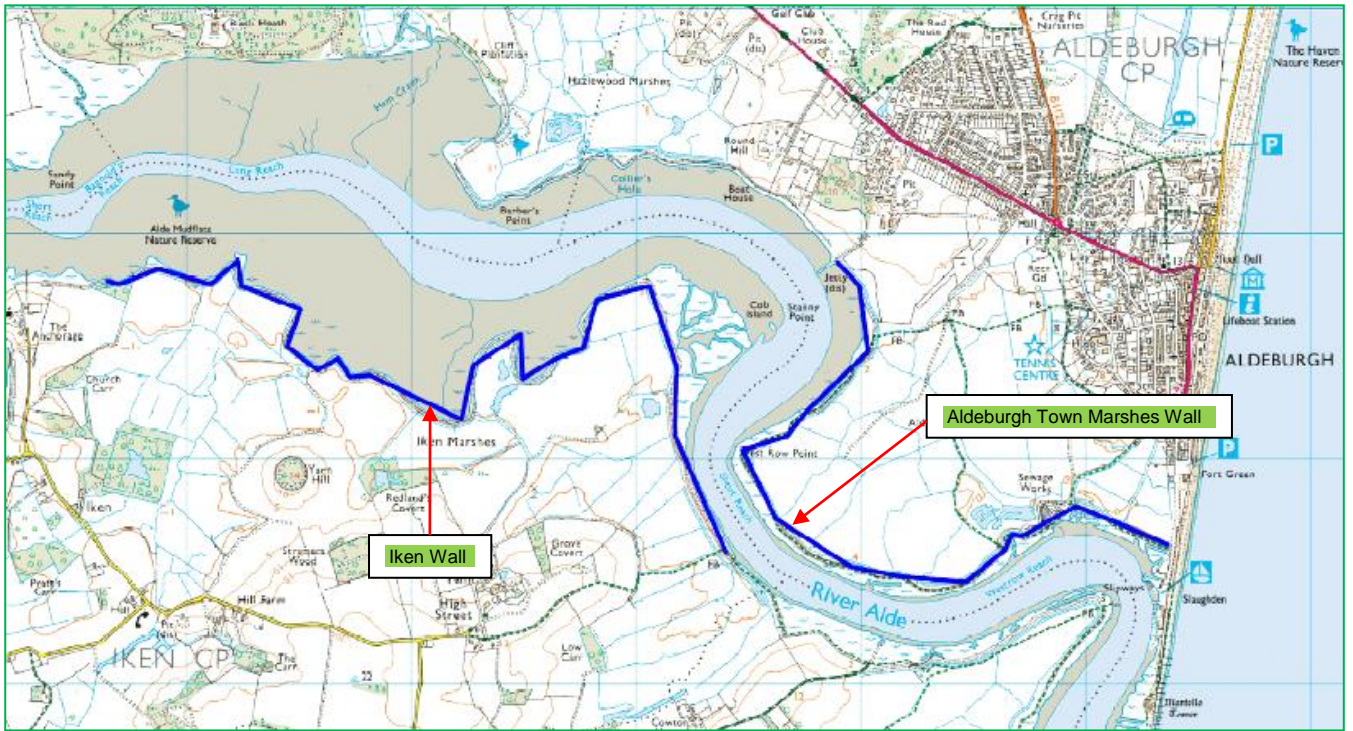
This work will help to keep the flood defences in the best possible condition to continue to protect people, property and valuable agricultural land from flooding.

How can you get involved or get in touch?

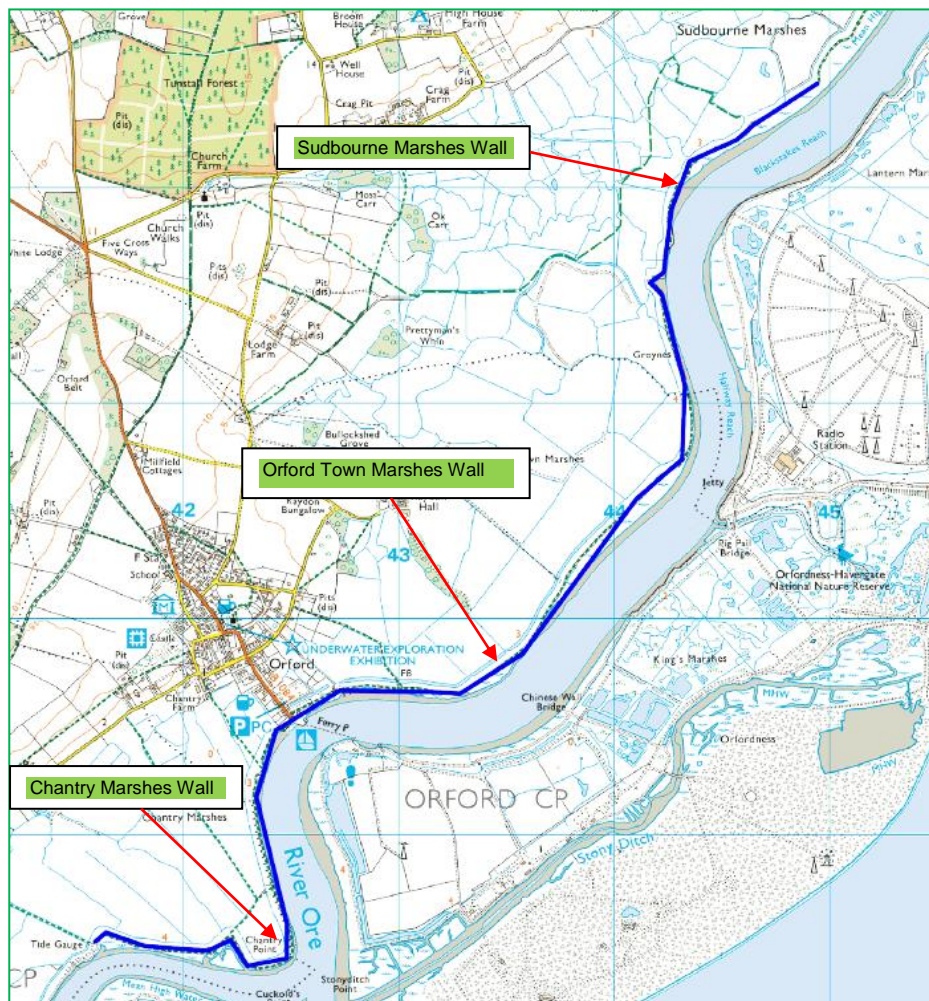
This information is to let you know about vital work going on in your community. We are happy to come along to community groups and residents associations to explain more about the work. Please contact us if you would like to discuss this in more detail. We will keep you up to date with any further developments.

Contact

Suffolk Asset Performance, Environment Agency, Cobham Road, Ipswich, IP3 9JD
Tel: 01473 706004



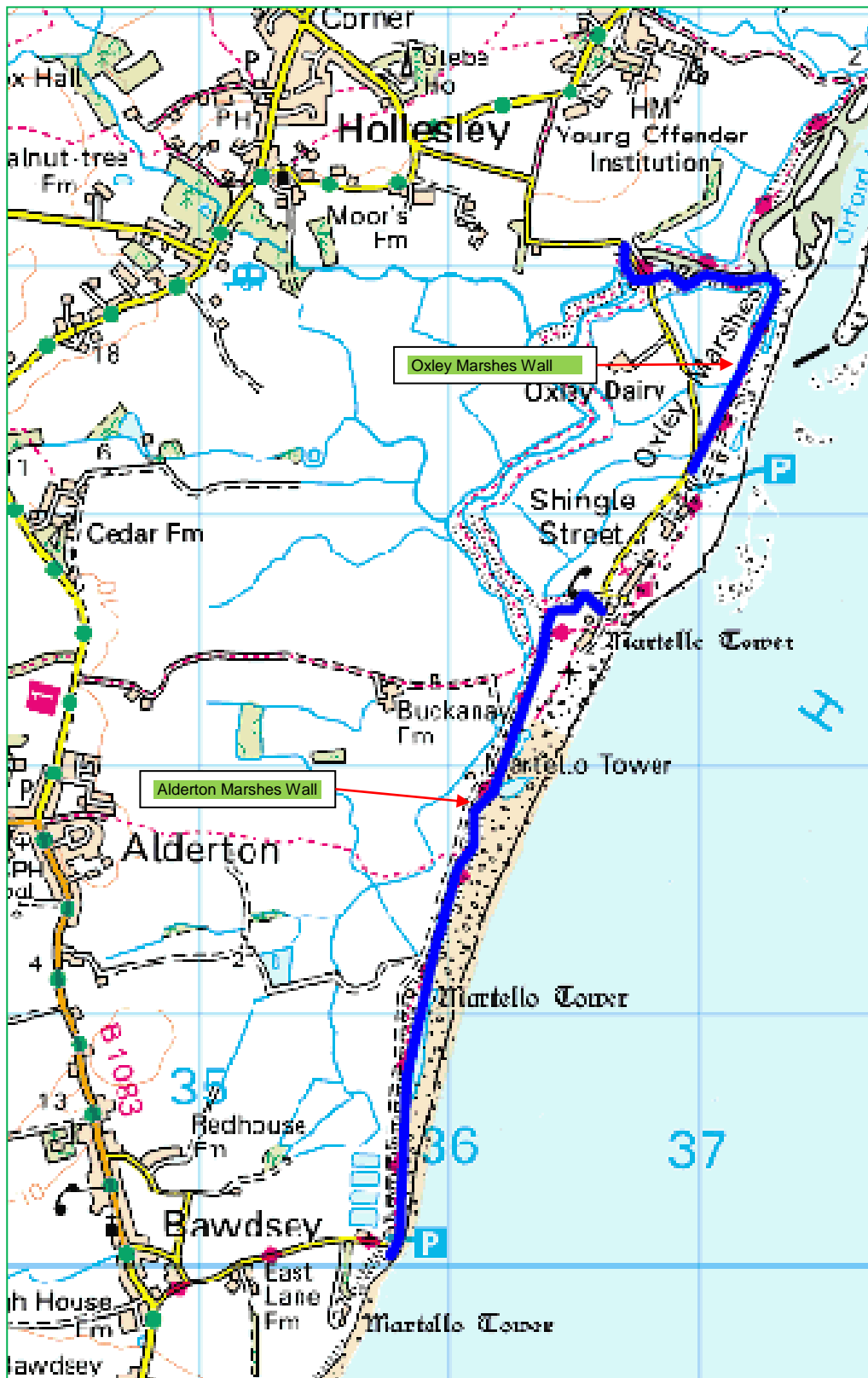
Map 1: showing the flood defences where we will be grass cutting



Map 2: showing the flood defences where we will be grass cutting



Map 3: showing the flood defences where we will be grass cutting



Map 4: showing the flood defences where we will be grass cutting